

120cm wide



PLANOSOL®



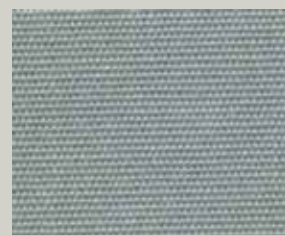
314 010 White



314 723 Mist Grey



314 364 Pewter



314 941 Silver Grey



314 638 Graphite



314 154 Black



314 E67 Ivory



314 325 Ecu



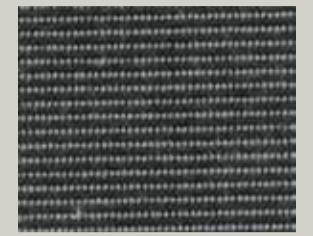
314 030 Silk Grey



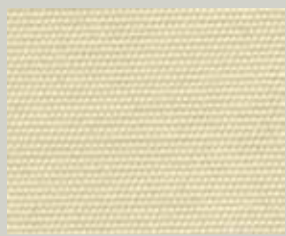
314 028 Marble Grey



314 398 Slate Grey



314 402 Charcoal Tweed



314 851 Champagne



314 814 Sandstone



314 921 Barley



314 819 Taupe



314 085 Mushroom



314 403 Linen Tweed



314 020 Sand



314 038 Camel



314 919 Biscuit



314 917 Walnut



314 013 Brown



314 016 Chocolate



314 143 Mulberry



314 397 Magenta



314 347 Burnt Red



314 001 Dark Red



314 022 Rust



314 763 Bordeaux



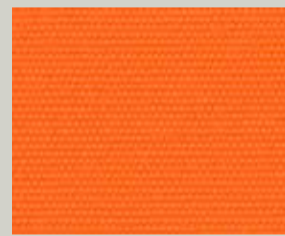
314 033 Cream



314 003 Yellow



314 014 Marigold



314 002 Orange



314 005 Burnt Orange



314 007 Red



338 089 Lime



314 396 Lichen



314 060 Mojito



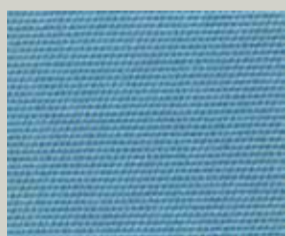
314 624 Sage



314 004 Light Green



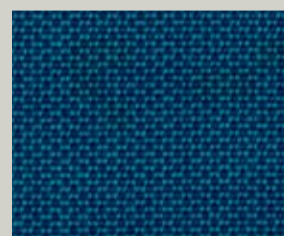
314 362 Fir Green



314 153 Topaz



314 546 Dusky Blue



338 507 Azure Blue



314 011 Royal Blue



314 006 Dark Blue



314 414 Marine

205cm wide



PLANOSOL®



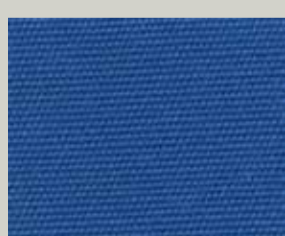
314 020 Sand



314 362 Fir Green



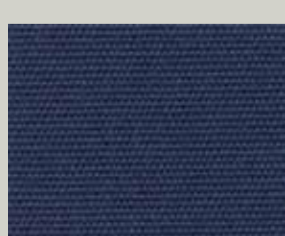
314 941 Silver Grey



314 011 Royal Blue



314 398 Slate Grey



314 414 Marine



314 154 Black



314 587 Admiral Blue

Experience the Planosol difference

Planosol is the most reliable outdoor fabric available in New Zealand. Proven in New Zealand conditions for more than 30 years, Planosol is used in the highest quality awnings, marine covers, outdoor furniture and umbrellas.

- The widest range of colours on the market
- Woven from 100% acrylic fibre in Austria to the highest quality standards
- Rot and fade resistant
- Air permeable and water repellent
- Highest UV protection.

7 year guarantee

Rot resistant

Planosol will remain rot resistant for 7 years.

Fade resistant

Planosol is fade resistant and will retain light fastness of 6-7 on a 1-8 scale. Planosol will attain UV Protection ratings of UPF 50+ and SPF 40-80.

Care/Cleaning instructions

- Do not use solvents or abrasive detergents
- Brush off loose dirt
- If required clean with a solution of mild natural soap in luke warm water (No hotter than 38 degrees C)
- Rinse several times with clean water to remove soap
- If fabric is regularly exposed to damp conditions extra cleaning is recommended
- It is recommended that the awning or cover be dry before storage.